


EKTOR SGL 46 56 60

Horizontal display freezer with straight glass



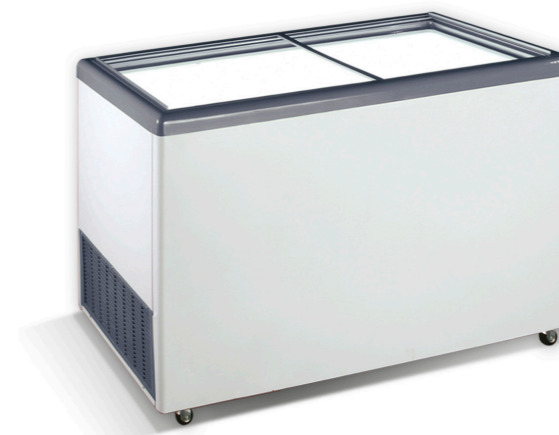
-18/-26 °C 



EKTOR 60 SGL
1754 x 644 x 895
575lt

Models

EKTOR 46 SGL • EKTOR 56 SGL • EKTOR 60 SGL



EKTOR 46 SGL
1439 x 644 x 895
445lt



EKTOR 56 SGL
1654 x 644 x 895
535lt



Technical Specifications

TECHNICAL SPECIFICATIONS	UNITS	EKTOR 46 SGL	EKTOR 56 SGL	EKTOR 60 SGL
External dimensions (lxwxh)	mm	1439 x 644 x 895	1654 x 644 x 895	1754 x 644 x 895
Internal dimensions (lxwxh)	mm	1315 x 520 x 737	1530 x 520 x 737	1630 x 520 x 737
Packing dimensions (lxwxh)	mm	1455 x 740 x 912	1670 x 740 x 912	1770 x 740 x 912
Internal gross volume	lt	445	535	575
Number of baskets**	pcs	5	6	6
Baskets for ice-cream / flavors**	pcs	3/10	4/12	4/12
Temperature range	°C	-18 / -26	-18 / -26	-18 / -26
Gross / net weight	kg	90.5 / 80	94.5 / 82	99.5 / 87
Energy consumption*	kW/24h	2.22	3.89	3.99
Pieces per truck 13.6m	-	54	48	44
Pieces per 20/40'ft container	-	20 / 48	20 / 42	18/38
Refrigeration	-	STATIC	STATIC	STATIC
Refrigerant	-	R290	R290	R290

*The energy consumption concerns specific metrics

**The baskets are optional equipment



Advantages

- Ideal for promoting frozen products
- Selected by leading companies in the ice cream sector
- Ideal for heavy duty and outdoors use
- Reliable and functional
- Optimum product visibility
- Plug-ready



Basic Equipment

- Hi efficiency compressor
- Thermometer
- Four castor wheels
- Mechanical thermostat
- Locker
- Drainage
- Air cooled condenser
- Internal body from non toxic pre-painted steel sheet



Optional Equipment

- Divider
- Basket for frozen food
- Baskets for ice cream
- Internal LED lighting
- Canopy holder
- Digital controller
- Maintenance free condenser
- EBD electronic fan motor (compressor)
- Branding

